

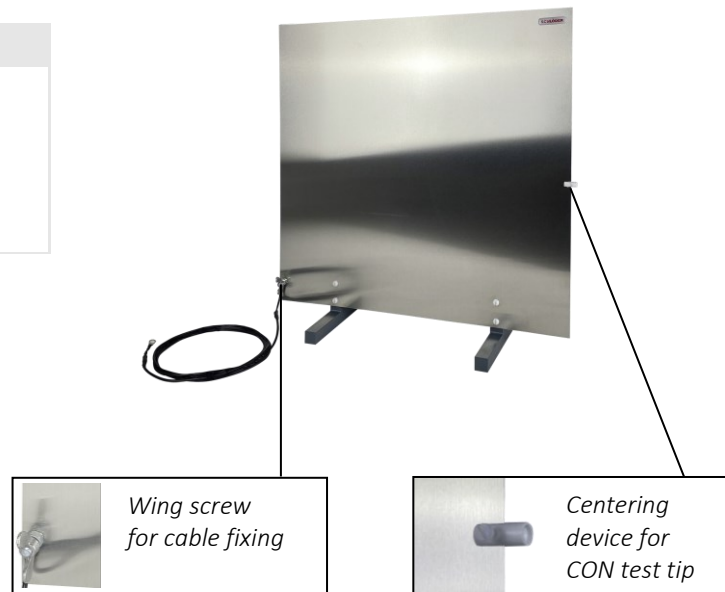
SESD 271

Vertical Coupling Plate (VCP)

IEC / EN 61000-4-2

- For ESD pulses up to 30 kV according to IEC/EN 61000-4-2
- VCP made of aluminium
- Centering device for CON test tip

Vertical coupling plate with 2 m long 2 x 470 kΩ ground cable and standard-compliant spacers.



Overview

The Vertical Coupling Plate (VCP) is used in conjunction with ESD generators to simulate indirect discharges on metallic objects that are near a test object. The bleeder resistors contained in the ground wire of the VCP serve to prevent the applied charge

from vanishing immediately after discharge of the ESD generator to the VCP, thereby increasing the effect of the ESD test.

Technical data

VCP		Ground Wire	
Dimensions	50 x 50 cm	Color	black
Material	aluminium	Length	2 m
Thickness	1,5 mm	Connections	cable connectors Ø 6.2 mm
		Bleeder resistors	2 x 470 kΩ
		Outer diameter	approx. 3,5 mm
		Voltage max	for ESD pulses according to IEC / EN 61000-4-2 up to 30 kV

All information regarding appearance and technical data correspond to the current state of development at the time of release of this data sheet. We reserve the right to make technical changes. 262101

